

OliverSearsGallery

Works from the Studio

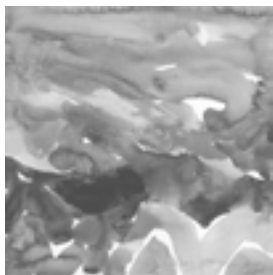
Barrie Cooke





Works from the Studio

Barrie Cooke

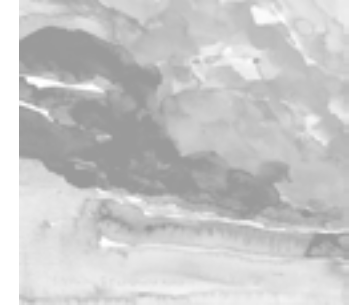


Oliver Sears Gallery is pleased to announce Works from the Studio, a collection of paintings, watercolours and drawings from the studio of the late Barrie Cooke. In collaboration with Barrie Cooke's heirs, Oliver Sears Gallery has curated an intimate exhibition spanning almost fifty years of practice.

A Sheela-na-Gig from 1960 is the earliest work in the exhibition and a series of watercolours made at Cill Rialaig in 2008, the latest. Landscapes from South Africa and New Zealand, a bone work from 1972, a classic Cooke nude from 1986, a portrait of John Montague and a Hot Tub painting represent other established periods brought together in this mini survey.



Barrie Cooke 2007



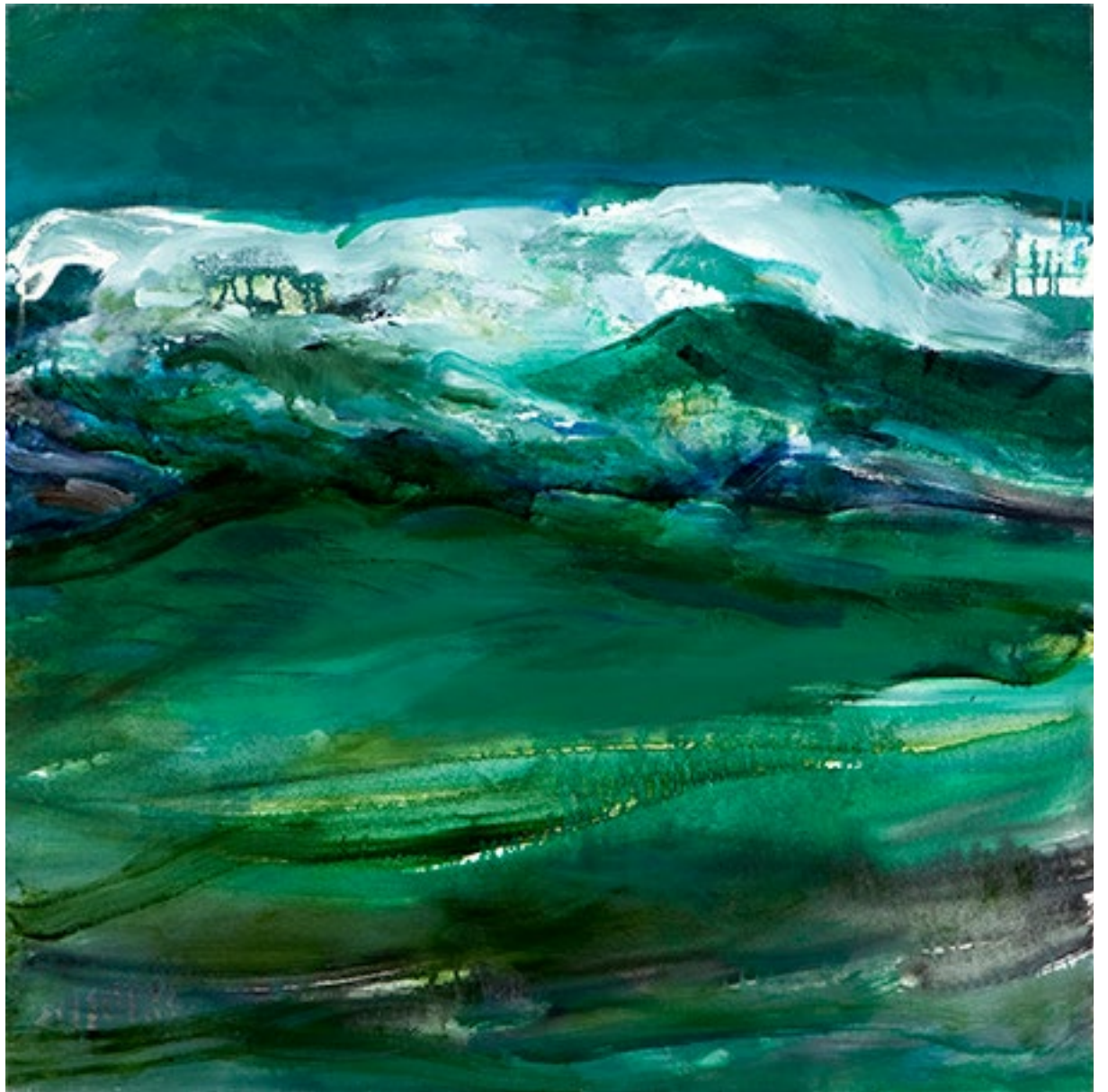
Barrie Cooke had a long and illustrious career. His approach to the environment was as sincere as it was unsentimental. His aesthetic was a response both to the intellectual and the beautiful. In our times of heightened political awareness, Cooke's values hold an honesty we would do well to cling to.

Works from the Studio runs until 22 June 2017.



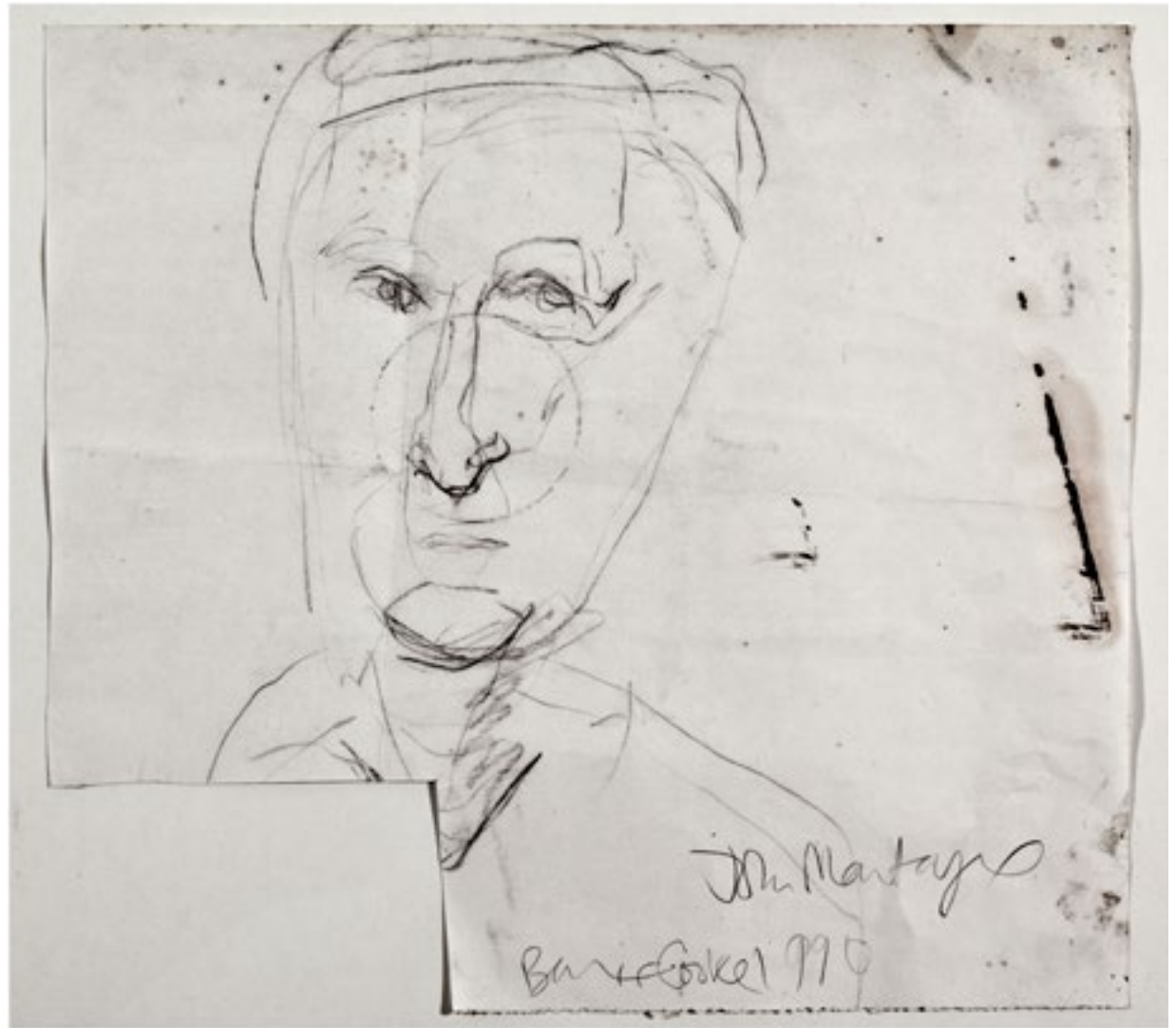
Sea

Oil on canvas
77 x 77 cm
2008



John Montague

Drawing on paper
38 x 41.5 cm
1990



Scapula

Watercolour on paper
53 x 64 cm
1972



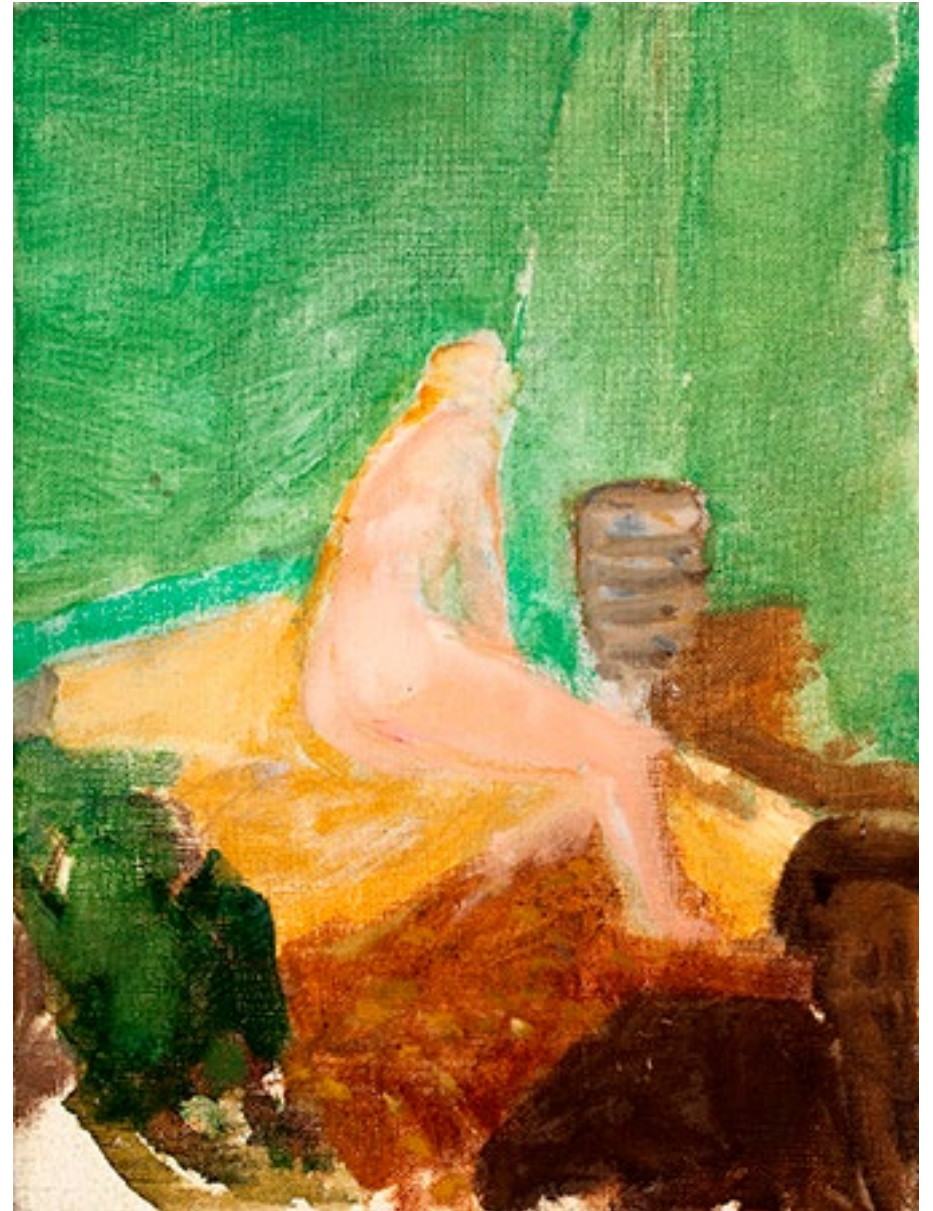
Sheela na Gig

Oil on canvas
23.5 x 29.5 cm
1960



Eilleen in the Tent at L.Mask

Oil on canvas laid on panel
27.5 x 20 cm
1984



Sea Point VIII SA

Watercolour on paper
24.5 x 34 cm
2007



Springbok II SA

Watercolour on paper
24.5 x 34 cm
2007



Springbok I Kruger SA

Watercolour on paper
24.5 x 34 cm
2007



Great White Shark IV SA

Watercolour on paper
24.5 x 34 cm
2007



Clutha River Cliff III

Watercolour on paper
33.5 x 49 cm
1998



Cill Raillaig VII

Watercolour on paper
24 x 24 cm
2008



Cill Raillaig X

Watercolour on paper
24 x 24 cm
2008



Cill Raillaig IX

Watercolour on paper
24 x 24 cm
2008





Two (4 Panels)

Two I / Two II / Two III / Two IV

Oil on canvas
Each panel
58.5 x 58.5 cm
1968/71

Nude with White and Black Sleeping

Oil on canvas
132 x 150 cm
1986



Big Hot Tub

Oil on canvas
185 x 185 cm
2005

